



Benton County



Lane County



Lincoln County



Linn County

Cascades West Economic Development District

2009 Update Report

to the

Comprehensive Economic Development Strategy

Prepared by the

Oregon Cascades West Council of Governments

and the

Lane Council of Governments



Produced with grant assistance provided by

U.S. Department of Commerce

Economic Development Administration

Published May 2009



SECTION 1

Introduction

Report Context

This 2009 Update Report provides current information that supplements the:

- ◆ **Comprehensive Economic Development Strategy (CEDS)** of the Cascades West Economic Development District (CWEDD), approved in 2006. The CEDS includes detailed information on demographics, natural systems, communities, and economy of the region. The CEDS also provides the vision, goals, and work program framework of the CWEDD. This CEDS document also addressed State requirements for the 2005-2007 BL3 Regional Investment Strategy.
- ◆ **2007 Update Report**, published June 2007, which includes input from a regional economic development forum on broad regional trends and refinement of potential initiatives.

The purpose of this Update Report is to provide additional information that will assist the economic development planning and grant writing efforts within the CWEDD region. This information includes:

- ◆ Current demographic and economic data
- ◆ Identification of trends not already noted in the CEDS or prior Update Reports which are highly likely to impact region-wide economic health

Organization of Update Report

This Update Report follows the content of the CEDS:

- 1 - Introduction
- 2 - Population and Income Trends
- 3 - Economic Trends
- 4 - Accomplishments and Next Steps

Please refer to the 2005-07 CEDS/RIS while reviewing this Report to gain a full view of the regional situation:
<http://www.ocwcog.org/files/ceds-ris%20final.pdf>



SECTION 2

Changes in Population & Income

Population of Counties & Cities

Counties & Cities	July 1 Population Estimates					Census Population	
	2008	2007	2006	2005	2004	2000	1990
OREGON	3,791,060	3,745,455	3,690,505	3,631,440	3,582,600	3,421,399	2,842,321
BENTON	86,120	85,300	84,125	82,835	81,750	78,153	70,811
Adair Village	930	930	920	905	870	536	554
Albany (part)*	6,697	6,599	6,535	6,455	6,215	5,104	15
Corvallis	54,880	54,890	53,900	53,165	52,590	49,322	44,757
Monroe	690	625	610	610	610	607	448
Philomath	4,610	4,530	4,460	4,400	4,340	3,838	2,983
LANE	345,880	343,140	339,740	336,085	333,350	322,977	282,912
Coburg	1,075	1,070	1,075	1,070	1,050	969	763
Cottage Grove	9,445	9,345	9,275	9,110	9,010	8,445	7,403
Creswell	4,710	4,650	4,500	4,525	4,120	3,579	2,431
Dunes City	1,360	1,360	1,345	1,330	1,300	1,241	1,081
Eugene	154,620	153,690	148,595	146,160	144,640	137,893	112,733
Florence	9,410	8,270	8,270	8,185	7,830	7,263	5,171
Junction City	5,300	5,135	4,965	4,945	4,910	4,721	3,692
Lowell	1,015	995	955	920	900	880	785
Oakridge	3,745	3,700	3,700	3,680	3,680	3,172	3,063
Springfield	58,005	57,320	57,065	55,855	55,350	52,864	44,664
Veneta	4,840	4,640	4,240	3,955	3,660	2,762	2,519
Westfir	340	335	335	330	330	280	278
LINCOLN	44,715	44,630	44,520	44,405	44,400	44,479	38,889
Depoe Bay	1,405	1,355	1,310	1,275	1,240	1,174	870
Lincoln City	7,875	7,615	7,615	7,615	7,470	7,437	5,903
Newport	10,580	10,455	10,240	9,925	9,760	9,532	8,437
Siletz	1,190	1,165	1,150	1,130	1,130	1,133	992
Toledo	3,610	3,585	3,590	3,585	3,580	3,472	3,174
Waldport	2,145	2,130	2,110	2,060	2,060	2,050	1,595
Yachats	780	765	745	730	710	617	533
LINN	110,185	109,320	108,250	107,150	106,350	103,069	91,227
Albany (part)*	42,073	40,871	40,075	38,905	37,815	35,748	29,525
Brownsville	1,775	1,755	1,610	1,530	1,510	1,449	1,281
Gates (part)*	50	45	45	45	45	42	41
Halsey	840	780	780	760	750	724	667
Harrisburg	3,435	3,400	3,355	3,275	3,010	2,795	1,939
Idanha (part)*	85	85	85	85	85	85	112
Lebanon	15,185	14,705	14,355	13,940	13,550	12,950	10,950
Lyons	1,130	1,105	1,105	1,090	1,070	1,008	938
Mill City (part)*	1,311	1,292	1,260	1,240	1,230	1,225	1,247
Millersburg	1,135	1,030	935	830	760	651	715
Scio	775	760	725	725	710	695	623
Sodaville	290	290	290	290	290	290	192
Sweet Home	9,045	8,995	8,790	8,500	8,380	8,016	6,850
Tangent	985	970	870	955	930	933	556
Waterloo	215	210	230	230	230	239	191

* City located in more than one county. Source: PSU Population Research Center, 3/09

Population of Cities Located in More than One County

Cities	July 1 Population Estimates					Census Population	
	2008	2007	2006	2005	2004	2000	1990
Albany	48,770	47,470	46,610	45,360	44,030	40,852	29,540
in Benton	6,981	6,599	6,535	6,455	6,215	5,104	15
in Linn	41,789	40,871	40,075	38,905	37,815	35,748	29,525
Gates	505	505	500	495	490	471	499
in Linn	50	45	45	45	45	42	41
in Marion	455	460	455	450	445	429	458
Idanha	230	230	230	230	230	232	289
in Linn	85	85	85	85	85	85	112
in Marion	145	145	145	145	145	147	177
Mill City	1,640	1,620	1,585	1,555	1,540	1,527	1,555
in Linn	1,311	1,292	1,260	1,240	1,230	1,225	1,247

Source: PSU Population Research Center, 3/09

While partially located within the region, the Cities of Gates and Idanha work with the Mid-Willamette Economic Development Districts because their city halls are located in Marion County.

Of the 36 remaining cities in the region, the majority are relatively small towns with:

- ♦ 83% of the region's cities having populations estimated at below 10,000,
- ♦ 50% having fewer than 2,000 residents, and
- ♦ 25% with fewer than 1,000 residents.

Corvallis and Eugene-Springfield are Metropolitan Statistical Areas and, along with Albany, rank among the ten most populous cities in Oregon.

Population Growth

The population of the region continues to grow more slowly than that of the overall population of Oregon. The total estimated population of the region increased 7% from 2000 to 2008, compared with a statewide population growth rate of almost 11%. The average annual rate of growth of the region also appears to be slowing, with the annual average growth rate of the region at .85% from 2000 to 2008, compared with a 1.3% annual average growth rate in the region between 1990 and 2000.

Population Trends

	July 1 Population Estimates					Census Population		Change 2000-08	Avg/Yr 2000-08
	2008	2007	2006	2005	2004	2000	1990		
Oregon	3,791,060	3,745,455	3,690,505	3,631,440	3,582,600	3,421,399	2,842,321	10.80%	1.29%
Benton	86,120	85,300	84,125	82,835	81,750	78,153	70,811	10.19%	1.22%
Lane	345,880	343,140	339,740	336,085	333,350	322,977	282,912	7.09%	0.86%
Lincoln	44,715	44,630	44,520	44,405	44,400	44,479	38,889	0.53%	0.07%
Linn	110,185	109,320	108,250	107,150	106,350	103,069	91,227	6.90%	0.84%
Region	586,900	582,390	576,635	570,475	565,850	548,678	483,839	6.97%	0.84%

Source: PSU Population Research Center, 3/09

Growth continues to be driven by the more urban areas of the region. Eugene, Springfield, Corvallis, and Albany, the four largest cities in the region, had a combined annual average growth rate of 1.33% from 2000 to 2008. The combined population of the remainder of the region grew only slightly with an annual average growth rate of .12% from 2000 to 2008.

Income and Poverty Data

The most recent income data available is the U.S. Census Bureau's 2007 estimates provided through the American Community Survey. This data continues to show that, with the exception of some Benton County indicators, the region lags behind income levels for Oregon as a whole, and the U.S.

2007 Annual Income Estimates

	Benton	Lane	Lincoln	Linn	Oregon	U.S.
Per Capita Income	\$25,726	\$23,530	\$21,893	\$21,785	\$25,097	\$26,178
Median Household Income	\$45,574	\$43,111	\$36,671	\$44,397	\$47,385	\$50,007
Mean Household Income	\$61,865	\$56,211	\$49,176	\$53,257	\$61,959	\$67,799
Median Family Income	\$67,044	\$54,603	\$47,801	\$52,410	\$57,716	\$60,374
Mean Family Income	\$80,283	\$68,086	\$58,555	\$60,296	\$72,967	\$78,708
Median Earnings for Workers	\$21,420	\$24,979	\$28,068	\$26,321	\$26,002	\$29,029

Source: American Community Survey 2005-2007 Estimates

The following table relays anomalies that are likely related to the demographic makeup of each county. Benton County's lower percentage of households with Social Security and relatively high percentage of population below the poverty level are partially influenced by its college student population. Lincoln County's higher percentage of households receiving Social Security income and of families below the poverty level may be linked to its larger than average retirement age population.

Supplemental Income and Poverty Indicators

	Benton	Lane	Lincoln	Linn	Oregon	U.S.
Households with Social Security Income	21.9%	26.9%	36.8%	31.4%	27.0%	26.8%
Households with Cash Public Assistance	2.2%	2.2%	3.9%	2.1%	2.6%	2.3%
Households with Food Stamps (Last 12 Mths)	8.2%	12.6%	12.7%	12.7%	10.9%	7.9%
Families Below Poverty Level (Last 12 Mths)	8.1%	8.7%	11.9%	11.2%	9.3%	9.8%
Population Below the Poverty Level	19.3%	14.3%	17.6%	14.0%	13.5%	13.3%
Population Under Age 18 Below Poverty Level	14.6%	14.9%	22.9%	22.4%	17.4%	18.3%

Source: American Community Survey 2005-2007 Estimates



SECTION 3

Changes in the Economy

Overview of Current Economic Conditions

National Crisis = Local Crisis: The economic base of the region is increasingly unstable. As we are developing this Update Report, a few examples of how the national economic crisis is currently hitting the CWEDD region are:

- ◆ The historically-significant wood products sector in the region is grappling with limited national demand for building products by eliminating entire shifts of workers and using rolling curtailments that are expected to turn into plant closures if demand and prices remain flat.
- ◆ The economic diversification that CWEDD encouraged in high-technology product manufacturing over the last twenty-plus years is falling apart, with announcement that hundreds of jobs will be cut at the regional high-tech anchor of Hewlett-Packard. Ripple impacts from the HP reductions are anticipated in the near term at spin-off and associated technology firms.
- ◆ Successful efforts by the CWEDD to establish and grow a cluster around the recreational vehicle industry (funded in part by an EDA pilot project) are unraveling with announcements of major plant closures, the layoff of thousands of employees, and bankruptcy notices.
- ◆ The most recent seasonally adjusted unemployment rates (March 2009) identify double digit unemployment rates in Lane (13.1%), Lincoln (11.8%), and Linn (14.6%) Counties. Unemployment in Benton County (8.4%) is higher than it has been since 1974. *(Details provided below.)*

National Disaster/State of Emergency Declared: On May 1st, a federal salmon disaster declaration was extended for a second year along the Oregon coast south of Oregon's Cape Falcon (near Cannon Beach). The extension was based on the Pacific Fisheries Management Council (PFMC) early April recommendation to close all commercial salmon fishing for the 2009 ocean salmon season. A report by the PFMC noted that the 2008 closure had effectively gutted the West Coast commercial and recreational salmon fisheries and the National Oceanic and Atmospheric Administration (NOAA) estimated the loss of commercial and recreational harvest in 2008 resulted in \$60 million just in lost personal income. In mid-April, Oregon's Governor declared a state of emergency for all of Lincoln County and the coastal area of Lane County.

Region Identified as Economically Distressed by State: The State of Oregon Economic and Community Development Department identified all four counties in the region as "distressed" under its' temporary methodology (temporary methodology is used mid-year if the State's unemployment rate exceeds 8.0%) in May 2009. All cities and places in distressed counties are also considered distressed. This distress designation will hold until 180 days after any county's unemployment rate falls below 8.0% or upon the State's publishing of a new listing.

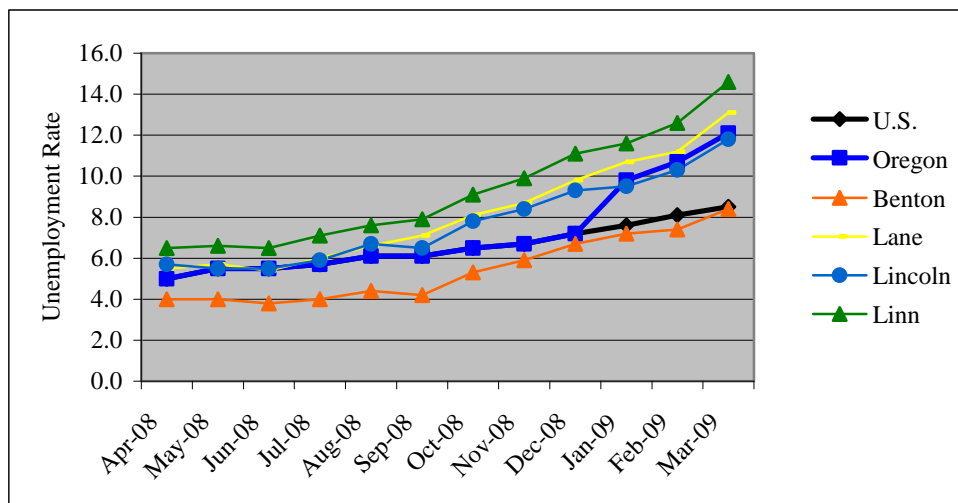
Employment and Unemployment Trends

Unemployment Escalates: Data for the most recent one-year period (March 2008-2009) indicates a loss of 13,460 nonfarm jobs in the region. Unemployment rates are increasing rapidly in all counties of the region, with recent jumps ranging near one to two percent per month. All of the following data is seasonally adjusted and provided by the Oregon Employment Department.

Unemployment Increases in Recent Report Periods

Area	1 Month Feb-Mar 2009	2 Months Jan-Mar 2009	6 Months Sep 08-Mar 09	1 Year Apr 08-Mar 09
Benton	1.0%	1.7%	4.2%	4.4%
Lane	0.9%	2.4%	6.0%	7.6%
Lincoln	1.5%	2.3%	5.3%	6.1%
Linn	2.0%	3.0%	6.7%	8.1%

Source: State of Oregon Employment Department



Source: State of Oregon Employment Department

Benton County typically enjoys one of the lowest unemployment rates in Oregon, with an annual average unemployment rate of 4.5% in 2008. Benton's February 2009 rate of 7.4% was the County's highest rate of unemployment since 1974. In March, Benton's rate had increased another full percent to 8.4%. There were 1,110 fewer nonfarm jobs in Benton County in March 2009 than in March 2008.

Lane County unemployment data is typically closely tied with that of the State, with 2008 annual average unemployment rates of 6.6% and 6.4% respectively. In December 2008 the Lane County rate was 9.7%. The Lane County unemployment rate had grown to 13.1% for March 2009. There were 9,300 fewer nonfarm jobs in Lane County in March 2009 than in March 2008.

Lincoln County unemployment rates have historically exceeded those of the U.S. by around 1%. This differential is increasing rapidly, with Lincoln exceeding the U.S. rate by 2.1% in December 2008 and by 3.3% in March 2009. Lincoln's March 2009 unemployment rate was 11.8%, but this rate does not factor in fishing (which is considered an agricultural activity). There were 980 fewer nonfarm jobs in Lincoln County in March 2009 than in March 2008.

Linn County unemployment rates historically exceed national rates by 1% or more. Recent data relays a high level of economic distress, with unemployment rates growing rapidly. While the 2008 Linn County annual average unemployment rate was 7.6%, Linn's rate increased to double digits by the end of 2008 (11.1% in December 2008) and by March 2009 grew to 14.6%. There were 2,070 fewer nonfarm jobs in Linn County in March 2009 than in March 2008.

Historical View of Seasonally Adjusted Unemployment Rates

Shading indicates local rate exceeds U.S. rate by 1% or more

2009	Jan	Feb	Mar	Apr	May	Jun	Jul	Aug	Sep	Oct	Nov	Dec	Year
U.S.	7.6	8.1	8.5										
State of Oregon	9.8	10.7	12.1										
Benton County / Corvallis MSA	7.2	7.4	8.4										
Lane County / Eugene- Springfield MSA	10.7	11.2	13.1										
Lincoln County	9.5	10.3	11.8										
Linn County	11.6	12.6	14.6										

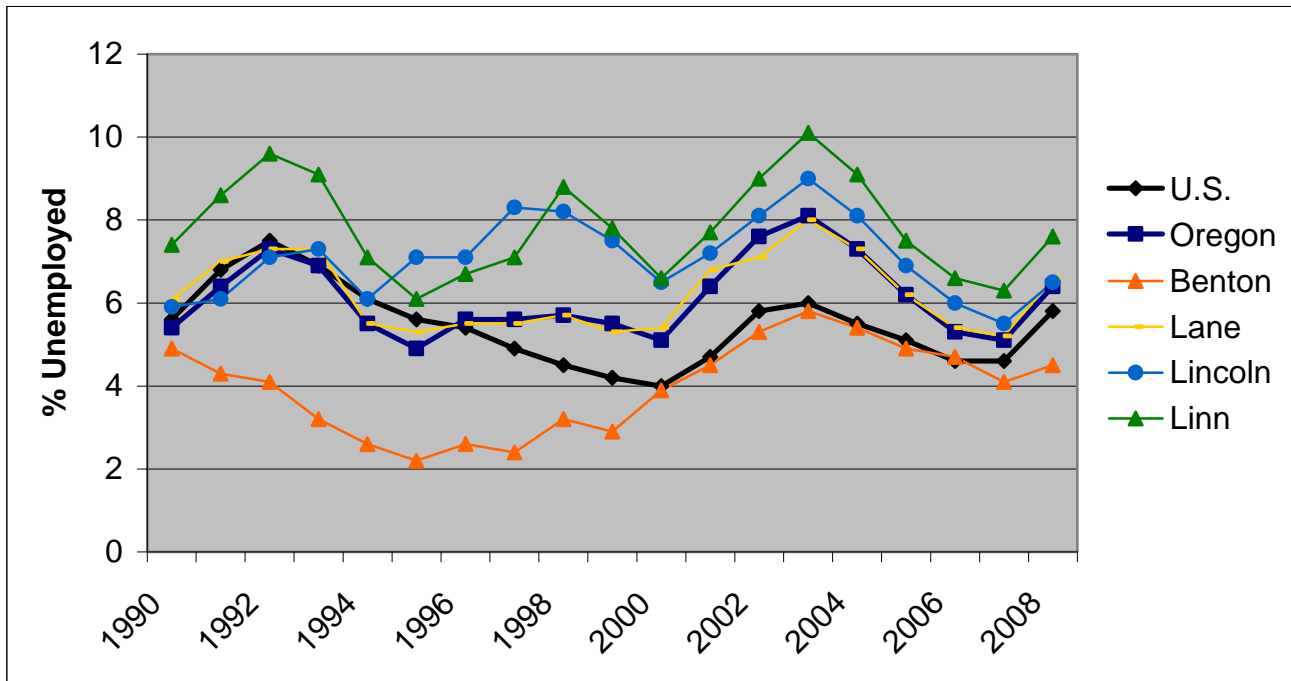
2008	Jan	Feb	Mar	Apr	May	Jun	Jul	Aug	Sep	Oct	Nov	Dec	Year
U.S.	4.9	4.8	5.1	5.0	5.5	5.5	5.7	6.1	6.1	6.5	6.7	7.2	5.8
State of Oregon	4.9	4.8	5.1	5.0	5.5	5.5	5.7	6.1	6.1	6.5	6.7	7.2	6.4
Benton County / Corvallis MSA	4.0	3.8	4.0	4.0	4.0	3.8	4.0	4.4	4.2	5.3	5.9	6.7	4.5
Lane County / Eugene- Springfield MSA	5.5	5.3	5.7	5.5	5.7	5.4	6.0	6.6	7.1	8.1	8.7	9.8	6.6
Lincoln County	6.0	5.8	6.0	5.7	5.5	5.5	5.9	6.7	6.5	7.8	8.4	9.3	6.5
Linn County	6.7	6.4	6.9	6.5	6.6	6.5	7.1	7.6	7.9	9.1	9.9	11.1	7.6

2007	Jan	Feb	Mar	Apr	May	Jun	Jul	Aug	Sep	Oct	Nov	Dec	Year
U.S.	4.6	4.5	4.4	4.5	4.5	4.6	4.7	4.7	4.7	4.8	4.7	5.0	4.6
State of Oregon	5.1	5.0	5.0	5.0	5.1	5.2	5.3	5.3	5.3	5.4	5.4	5.4	5.1
Benton County / Corvallis MSA	4.3	4.3	4.2	4.1	4.0	4.0	4.1	4.1	4.0	4.2	4.0	4.3	4.1
Lane County / Eugene- Springfield MSA	5.3	5.3	5.2	5.2	5.1	5.1	5.2	5.2	5.2	5.3	5.2	5.7	5.2
Lincoln County	5.9	5.8	5.7	5.6	5.5	5.4	5.6	5.6	5.3	5.6	5.5	5.8	5.5
Linn County	6.8	6.5	6.4	6.5	6.4	6.4	6.3	6.2	6.2	6.2	6.2	6.5	6.3

2006	Jan	Feb	Mar	Apr	May	Jun	Jul	Aug	Sep	Oct	Nov	Dec	Year
U.S.	4.7	4.7	4.7	4.7	4.7	4.6	4.7	4.7	4.5	4.4	4.5	4.4	4.6
State of Oregon	5.5	5.4	5.3	5.3	5.3	5.3	5.4	5.4	5.4	5.3	5.3	5.2	5.3
Benton County / Corvallis MSA	5.0	5.2	5.0	5.0	4.8	4.7	4.7	4.6	4.5	4.3	4.4	4.3	4.7
Lane County / Eugene- Springfield MSA	5.4	5.7	5.5	5.5	5.4	5.5	5.6	5.5	5.3	5.2	5.4	5.3	5.4
Lincoln County	6.1	6.3	6.2	6.1	5.9	6.1	6.1	6.0	6.0	5.7	5.8	5.7	6.0
Linn County	6.8	6.9	6.8	6.6	6.3	6.4	6.7	6.6	6.4	6.3	6.6	6.5	6.6

Source: State of Oregon Employment Department

Historical View - 1990-2008
Annual Average Seasonally Adjusted Unemployment Rates



Area	1990	1991	1992	1993	1994	1995	1996	1997	1998	1999	2000	2001	2002	2003	2004	2005	2006	2007	2008
U.S.	5.6	6.8	7.5	6.9	6.1	5.6	5.4	4.9	4.5	4.2	4	4.7	5.8	6	5.5	5.1	4.6	4.6	5.8
Oregon	5.4	6.4	7.3	6.9	5.5	4.9	5.6	5.6	5.7	5.5	5.1	6.4	7.6	8.1	7.3	6.2	5.3	5.1	6.4
Benton	4.9	4.3	4.1	3.2	2.6	2.2	2.6	2.4	3.2	2.9	3.9	4.5	5.3	5.8	5.4	4.9	4.7	4.1	4.5
Lane	6.1	7	7.3	7.3	5.5	5.3	5.5	5.5	5.7	5.3	5.4	6.8	7.1	8	7.3	6.2	5.4	5.2	6.6
Lincoln	5.9	6.1	7.1	7.3	6.1	7.1	7.1	8.3	8.2	7.5	6.5	7.2	8.1	9	8.1	6.9	6	5.5	6.5
Linn	7.4	8.6	9.6	9.1	7.1	6.1	6.7	7.1	8.8	7.8	6.6	7.7	9	10.1	9.1	7.5	6.6	6.3	7.6

Source: State of Oregon Employment Department

Labor Force Participation

Area	1999	2004	2005	2006	2007	2008	10-Year Change 1999-2008	10-Year Rate of Change	Annual Change 1999-2008
U.S.	133,488,000	139,252,000	141,730,000	144,427,000	146,047,000	145,362,000	11,874,000	8.90%	0.86%
Oregon	1,697,288	1,722,058	1,754,715	1,796,165	1,825,661	1,833,374	136,086	8.02%	0.77%
Benton	39,069	39,977	40,138	40,739	40,641	41,206	2,137	5.47%	0.53%
Lane	157,720	160,416	163,668	168,232	172,335	171,888	14,168	8.98%	0.86%
Lincoln	19,837	20,597	20,857	20,784	21,306	21,440	1,603	8.08%	0.78%
Linn	49,233	47,418	48,609	49,420	50,346	51,153	1,920	3.90%	0.38%
Region	265,859	268,408	273,272	279,175	284,628	285,687	19,828	7.46%	0.72%

Source: State of Oregon Employment Department

Sectors of the Economy

Data released by the State of Oregon for 2008 do not reflect the economic crisis currently occurring in the region. As discussed in the CEDS, recent job growth has been concentrated in the non-manufacturing sectors with significant increases in the health care industry. Employment in the traditional manufacturing mainstays of the economy have remained flat or declined over time.

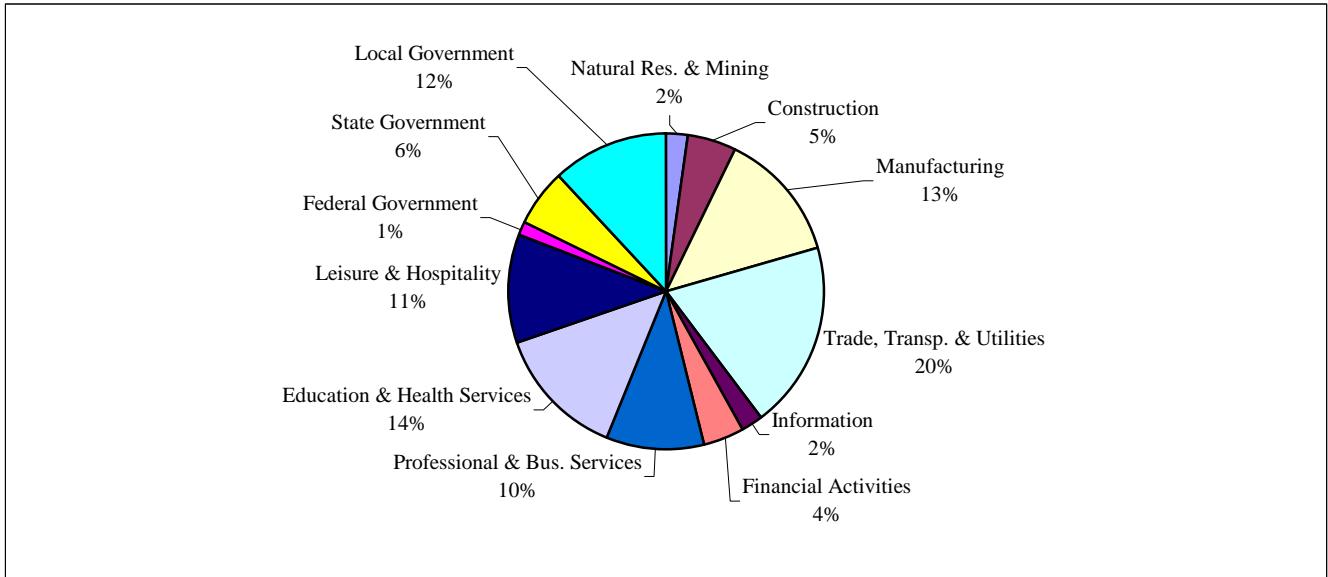
Businesses & Employment by NAIC Sector: 2008 CWEDD Region

NAI CS	Industry	Businesses & Govt. Units					Employment				
		Benton	Lane	Lincoln	Linn	Region	Benton	Lane	Lincoln	Linn	Region
-	Total All Ownerships	2,388	10,893	1,858	3,042	18,181	35,161	147,828	18,370	43,841	245,200
-	Total Private Coverage	2,309	10,510	1,746	2,896	17,461	26,430	123,004	14,269	36,350	200,053
-	Natural Resources & Mining	98	221	73	191	583	972	1,988	297	2,168	5,425
-	Construction	223	1,213	211	375	2,022	1,139	7,268	964	2,522	11,893
-	Manufacturing	97	588	63	213	961	4,368	17,667	1,097	8,058	31,190
311	Food manufacturing	11	53	15	16	95	95	1,479	281	718	2,573
312	Beverage & tobacco product mfg.	6	16	3	(c)		45	327	(c)	(c)	
314	Textile product mills	2	15	3	4	24	(c)	168	24	42	
321	Wood product manufacturing	7	72	6	31	116	332	4,142	78	1,825	6,377
322	Paper manufacturing	1	4	1	4	10	(c)	(c)	(c)	886	
323	Printing & related support	7	44	5	6	62	60	503	21	56	640
325	Chemical manufacturing	4	22	1	12	39	(c)	813	(c)	237	
326	Plastics & rubber prod mfg	3	18	1	8	30	106	149	(c)	280	
327	Nonmetallic mineral prod mfg	7	13	7	9	36	196	155	(c)	(c)	
331	Primary metal manufacturing	(c)	4	(c)	5		(c)	68	(c)	2,092	
332	Fabricated metal product mfg.	9	93	3	39	144	36	1,192	11	473	1,712
333	Machinery manufacturing	7	49	(c)	15		413	1,801	(c)	473	
334	Computer & electronic prod mfg	11	20	1	9	41	(c)	1,469	(c)	199	
335	Electrical equip & appliance mfg	(c)	5	1	3		(c)	111	(c)	16	
336	Transportation equipment mfg.	1	29	3	6	39	(c)	3,006	24	125	
337	Furniture & related product mfg.	9	48	5	20	82	94	755	11	182	1,042
339	Miscellaneous manufacturing	12	76	7	22	117	140	1,014	52	240	1,446
-	Trade, Transp. & Utilities	395	2,139	405	619	3,558	4,179	28,304	3,429	9,283	45,195
-	Wholesale	88	607	42	164	901	458	6,127	160	1,560	8,305
-	Retail	257	1,273	312	329	2,171	3,217	19,242	2,958	4,741	30,158
-	Transp., Warehousing & Utilities	50	260	52	127	489	505	2,936	311	2,981	6,733
-	Information	55	185	30	35	305	959	3,829	206	465	5,459
-	Financial Activities	215	1,133	157	244	1,749	1,087	6,663	628	1,276	9,654
-	Professional & Bus. Services	425	1,622	175	300	2,522	3,492	15,641	967	3,476	23,576
-	Education & Health Services	265	1,141	124	258	1,788	5,324	21,130	1,764	4,413	32,631
-	Education	32	144	14	30	220	308	1,521	120	367	2,316
-	Health & Social Assistance	234	998	111	228	1,571	5,016	19,609	1,644	4,046	30,315
-	Leisure & Hospitality	246	1,034	317	254	1,851	3,635	15,039	4,301	3,158	26,133
-	Total All Government	78	383	112	146	719	8,731	24,824	4,100	7,491	45,146
-	Total Federal Government	15	70	23	29	137	582	1,732	273	371	2,958
-	Total State Government	20	60	24	28	132	5,279	7,060	726	1,086	14,151
-	Total Local Government	43	253	65	89	450	2,871	16,032	3,102	6,034	28,039

(c): Confidential - data not released

Source: State of Oregon Employment Department

As in the past, the regional economy has more jobs in the government sectors due to the presence of two major State universities in the region. The addition of major distribution centers to the regional economy has added employment in the “Trade, Transportation, and Utilities” sector.





SECTION 4

Accomplishments & Next Steps

Recent Outcomes

Some of the more significant efforts undertaken on behalf of, or in coordination with, the CWEDD during the planning period of April 1, 2008 through March 31, 2009 include -

- ◆ Stepping into a regional leadership role in relaying American Recovery and Reinvestment Act opportunities and providing support to position projects for funding consideration.
- ◆ Finalizing a \$24 million funding package and starting construction for the City of Coburg Wastewater Facility after twelve years of project development effort.
- ◆ Initiating a regional industrial lands/wetlands mitigation project that pilots a multi-jurisdictional approach to economic opportunities analysis and industrial lands readiness.
- ◆ Implementing the EDA-funded Enterprise Development Initiative in Philomath, Newport, and Toledo and then restructuring those local efforts as the economy stalled.
- ◆ Influencing the framework of the State of Oregon's community and economic development efforts in cooperation with other Districts and partners.
- ◆ Retaining business lending activity at slightly less than the prior year despite tightening private capital markets:

	2005-2006*	2006-2007*	2007-2008*	2008-2009*
Number of Businesses Assisted	54	38	26	21
Public Funds Lent (non-CWFSI)	\$12.9 million	\$4.4 million	\$2.4 million	\$1.7 million
Jobs Created or Retained	420	281	136	123

* EDA reporting period of April 1 through March 31

- ◆ Identifying regional transportation needs with funds awarded to highest priorities of the Cascades West Area Commission on Transportation.
- ◆ Increasing the focus on entrepreneurial development including work on angel capital development and reinforcement of the economic development network.
- ◆ Developing a disaster resilience effort for businesses in Lincoln County under EDA funding.
- ◆ Structuring several million dollars of priority marine cluster public works projects in Lincoln County for EDA funding consideration.
- ◆ Awarding small grants to support local revolving loan funds and the industrial site wetlands effort by the BL3 Regional Investment Board despite a significant reduction in State funding.

Further details on these efforts and on the other accomplishments for the April 1, 2008 through March 31, 2009 period are provided in the Cascades West Economic Development District Annual Report. This Annual Report is posted on the web site of the Oregon Cascades West Council of Governments under the Community and Economic Development section at:

<http://www.ocwcog.org/SectionIndex.asp?SectionID=103>

Positioning Our Future Efforts

- ◆ The economic committees of CWEDD (the Lane Economic Committee and the OCWCOG Community and Economic Development Committee) have already begun to re-evaluate economic development work program priorities given the current state of the economy.

- ◆ While new private sector business investment is expected to be limited in the near term, we are increasing our outreach to existing businesses to help them reach existing pools of business capital.
- ◆ We will also continue to support our regional partners in building venture capital pools and in building connections between venture and angel funders and entrepreneurs in the region.
- ◆ We will continue to support the local governments in our region as they identify opportunities and barriers to their community and economic development efforts.
- ◆ Efforts underway to build on the region's entrepreneurial and innovation assets are expected to continue, but they may be rounded out with additional or different support systems to help buffer and protect the health of emerging firms.
- ◆ Efforts to build clusters may shift to include providing protection needed to help retain the clusters currently in place in the region.

In sum, EDA's investment in our planning work will allow us to continue to use the strong economic development network that we have built of local government, economic development, business, and community partners to shift our collective efforts to better meet emerging economic challenges and help our region weather and grow into a new economy.